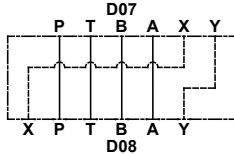
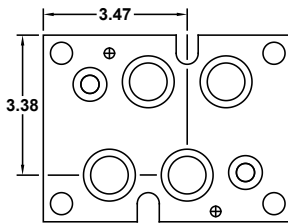
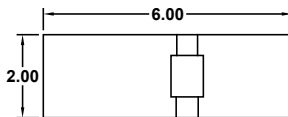
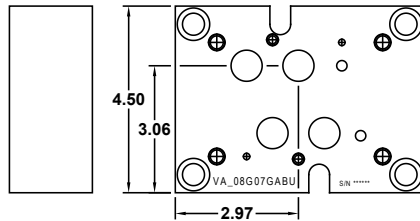
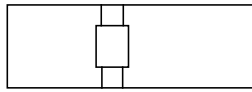
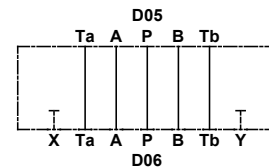
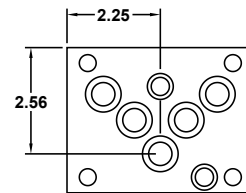
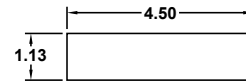
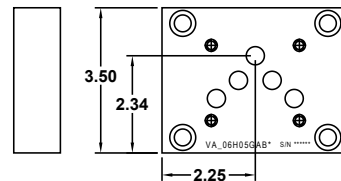
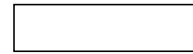


## D08 to D07 - Valve Adapters - D06 to D05

VA\_08G07GAB\*



VA\_06H05GAB\*



**UNC mounting kit includes:**

- 4 - 1/2"-13 x 2.25" SHCS
- 2 - 1/2"-13 x 1.25" SHCS
- 4 - 121 O-ring viton
- 2 - 114 O-ring viton
- 2 - pin

**Metric mounting kit includes:**

- 4 - M12 x 1.75 x 60mm SHCS
- 2 - M12 x 1.75 x 30mm SHCS
- 4 - 121 O-ring viton
- 2 - 114 O-ring viton
- 2 - pin

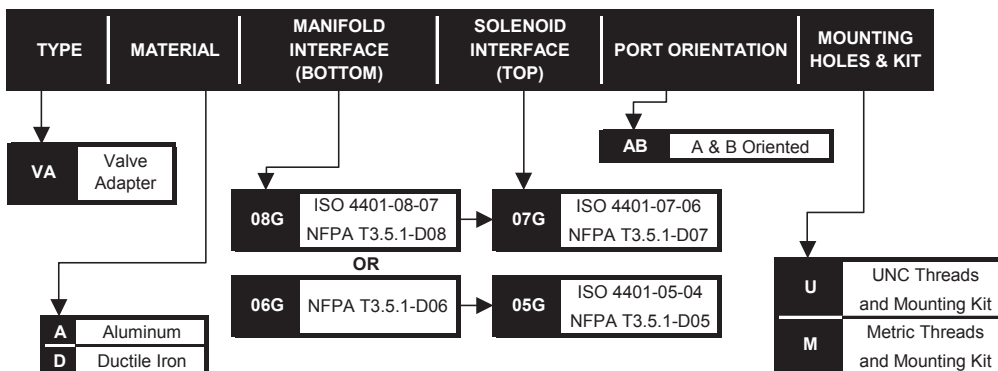
**UNC mounting kit includes:**

- 4 - 3/8"-16 x 1.25" SHCS
- 5 - 018 O-ring viton
- 2 - 014 O-ring viton

**Metric mounting kit includes:**

- 4 - M10 x 1.5 x 35mm SHCS
- 5 - 018 O-ring viton
- 2 - 014 O-ring viton

### PART NUMBER SYSTEM



WE RESERVE THE RIGHT TO DISCONTINUE MODELS, OR CHANGE SPECIFICATIONS WITHOUT NOTICE OR INCURRING OBLIGATION

Lynch Products Can Be Modified to Suit Your Application

Phone: 1 (888) 626-4365 or +1 (905) 363-2400 Fax: 1 (800) 263-5807 www.lynch.ca sales@lynch.ca