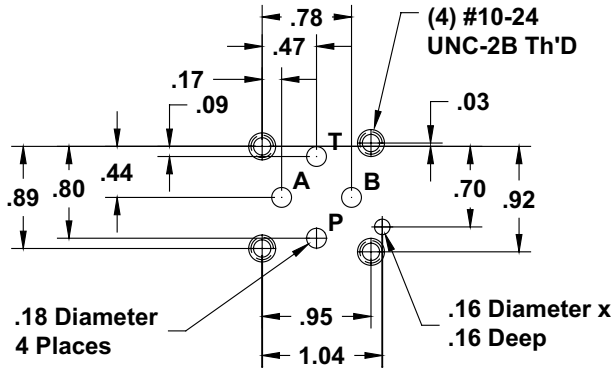


## Solenoid Valve Interfaces

### ISO 02 / NFPA D02

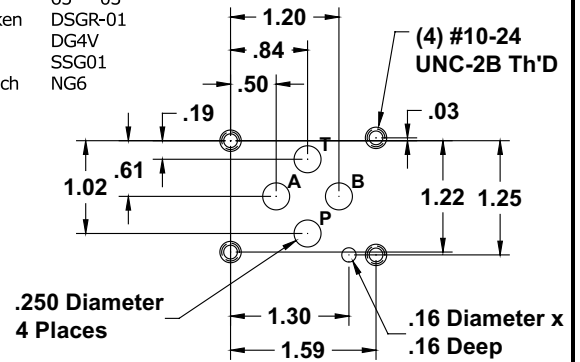
Valve Models  
Wandfluh WD



### ISO 03 / NFPA D03

Valve Models

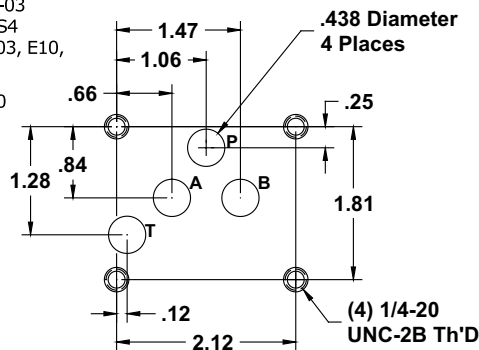
Continental VS5M, ED03M  
Delta Series 4000  
Denison A-3D01, D2D02-35  
Double A Q\* - 3  
Parker Hannifin D1VW  
Racine .25"  
Rexroth WE6, 4WRA6  
Rivett 65\*\*-.03  
Rucker/Yuken DSGR-01  
Vickers DG4V  
Nachi SSG01  
Racine-Bosch NG6



### ISO 05 / NFPA D05

Valve Models

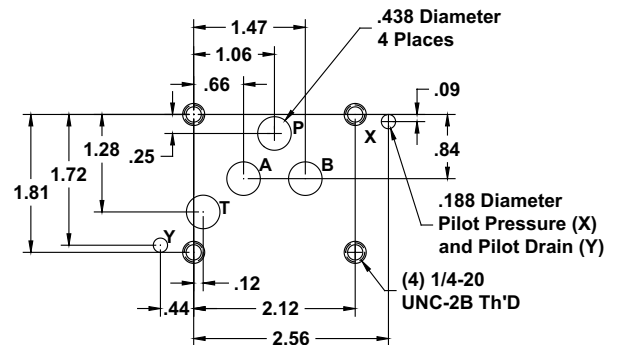
Continental VS12M, ED05M  
Denison DID04, 3D02, A-D2D04  
Double A Q\* - 5  
Parker Hannifin D3W  
Racine .25"  
Rexroth WE8, WE10  
Rivett 65\*\*-.02  
Rucker/Yuken DSG-03  
Vickers DG4S4  
Nachi SSG03, E10, E20  
Racine-Bosch NG10



### ISO 05 / D05 with X and Y U.S.

Valve Models

Double A Q\* - 02H  
Parker Hannifin D31VW  
Racine FD4-\*\*HS-\*.02  
Rivett 6600-02H  
Racine-Bosch NG10



THIS DATA IS FOR REFERENCE ONLY. CONSULT THE APPROPRIATE STANDARDS FOR CRITICAL DIMENSIONS AND RATINGS.

WE RESERVE THE RIGHT TO DISCONTINUE MODELS, OR CHANGE SPECIFICATIONS WITHOUT NOTICE OR INCURRING OBLIGATION

Lynch Products Can Be Modified to Suit Your Application

Phone: 1 (888) 626-4365 or +1 (905) 363-2400 Fax: 1 (800) 263-5807 www.lynch.ca sales@lynch.ca