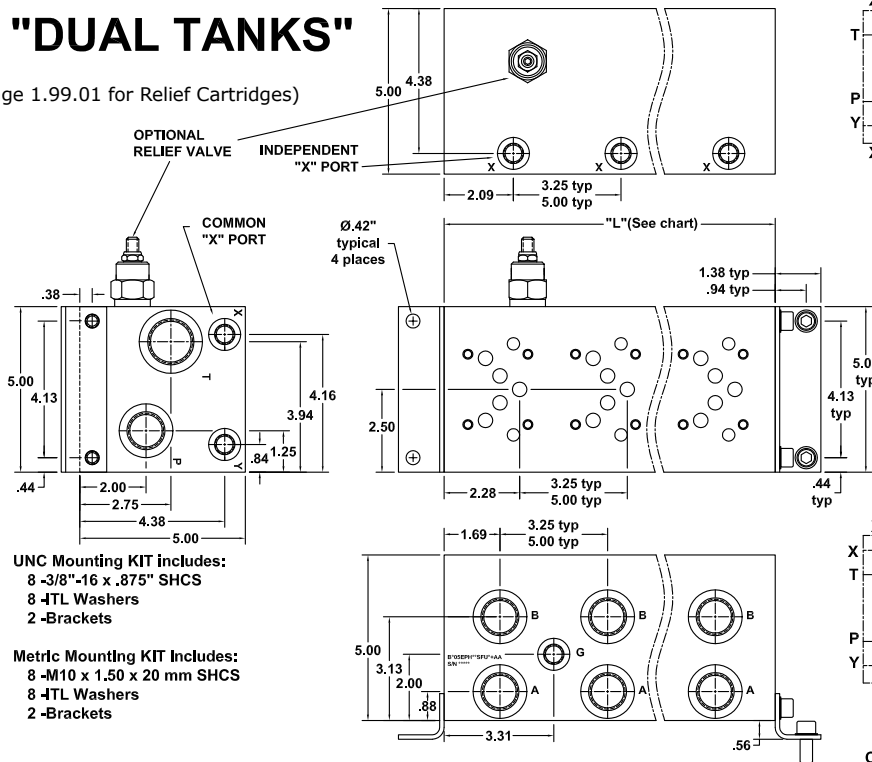


D05HE High Flow Parallel Circuit Manifold with X&Y

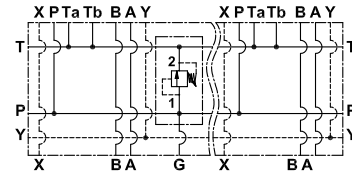
"DUAL TANKS"

(See Page 1.99.01 for Relief Cartridges)

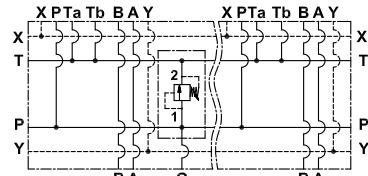
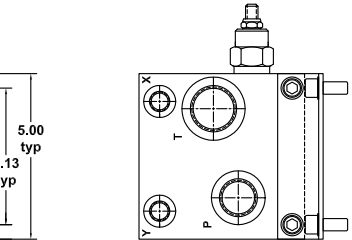


UNC Mounting KIT includes:
8 -3/8"-16 x .875" SHCS
8 -JTL Washers
2 -Brackets

Metric Mounting KIT Includes:
8 -M10 x 1.50 x 20 mm SHCS
8 -JTL Washers
2 -Brackets



PARALLEL CIRCUIT WITH COMMON "Y" PORT & OPTIONAL RELIEF AND INDEPENDENT "X" PORT SHOWN



PARALLEL CIRCUIT WITH COMMON "Y" PORT & OPTIONAL COMMON "X" PORT AND RELIEF SHOWN

No. of Stations	1	1*	2	3	4	5	6	7	8	9	10	11	12	13	14	15	16
Dim. "L", 3.25" spacing	3.50	4.50	6.75	10.00	13.25	16.50	19.75	23.00	26.25	29.50	32.75	36.00	39.25	42.50	45.75	49.00	52.25
est. weight in lb.- alum	9	11	16	23	31	38	45	53	60	67	74	82	89	96	104	111	118
est. weight in lb.- iron	22	28	42	62	81	101	121	140	160	180	200	219	239	259	279	298	318
Dim. "L", 5.00" spacing	-	-	8.50	13.50	18.50	23.50	28.50	33.50	38.50	43.50	48.50	53.50	58.50	63.50	68.50	-	-
est. weight in lb.- alum	-	-	20	31	42	54	65	76	87	99	110	121	132	144	155	-	-
est. weight in lb.- iron	-	-	52	83	113	144	174	204	235	265	295	326	356	387	417	-	-

* DIMENSIONS FOR 1 STATION WITH RELIEF CAVITY & GAUGE PORT
NO GAUGE PORT SUPPLIED WITH SINGLE STATION MANIFOLD
SHADED AREA AVAILABLE ON SPECIAL ORDER ONLY

PART NUMBER SYSTEM

Aluminum D05HE with 3.25" Spacing, Common Y & SAE porting example: **BA05EPH**SFUBAA**

TYPE	MATERIAL	VALVE PATTERN	CIRCUIT, CAPACITY & SPACING	Std. NO. of STATIONS	PORT CODE	MOUNTING THREADS & KIT	RELIEF CAVITY	PILOT PORT OPTIONS		
B	Bar Manifold			01 to 11	U M	D05 Valve 1/4"-20 UNC x 0.75" dp Manifold 3/8"-16 UNC x 0.75" dp D05 Valve M6 x 1.00 x 0.75" dp Manifold M10 x 1.50 x 0.75" dp		BAA Common Y CAA* Common Y & Indep X DAA Common Y & X		
A	Aluminum		PH Parallel circuit High Flow 3.25" Std. Spacing PI Parallel circuit High Flow 5.00" Wide Spacing							
D	Ductile Iron									
05E	ISO 4401-05-05 (EURO) NFPA T3.5.1-D05 Alt A									
					CODE					
					TYPE	T	P A & B	G	Y	X Optional
					SF	SAE	16	12	6	6
					NF	NPTF	1"	3/4"	1/4"	3/8"
					BF	BSPP	1"	3/4"	1/4"	3/8"
					TF	BSPT	1"	3/4"	1/4"	3/8"
					MF	METRIC	M33	M27	M10	M14

*= Non-Standard

A	None
E	Sun T-3A
D	Common C10-2

WE RESERVE THE RIGHT TO DISCONTINUE MODELS, OR CHANGE SPECIFICATIONS WITHOUT NOTICE OR INCURRING OBLIGATION

Lynch Products Can Be Modified to Suit Your Application