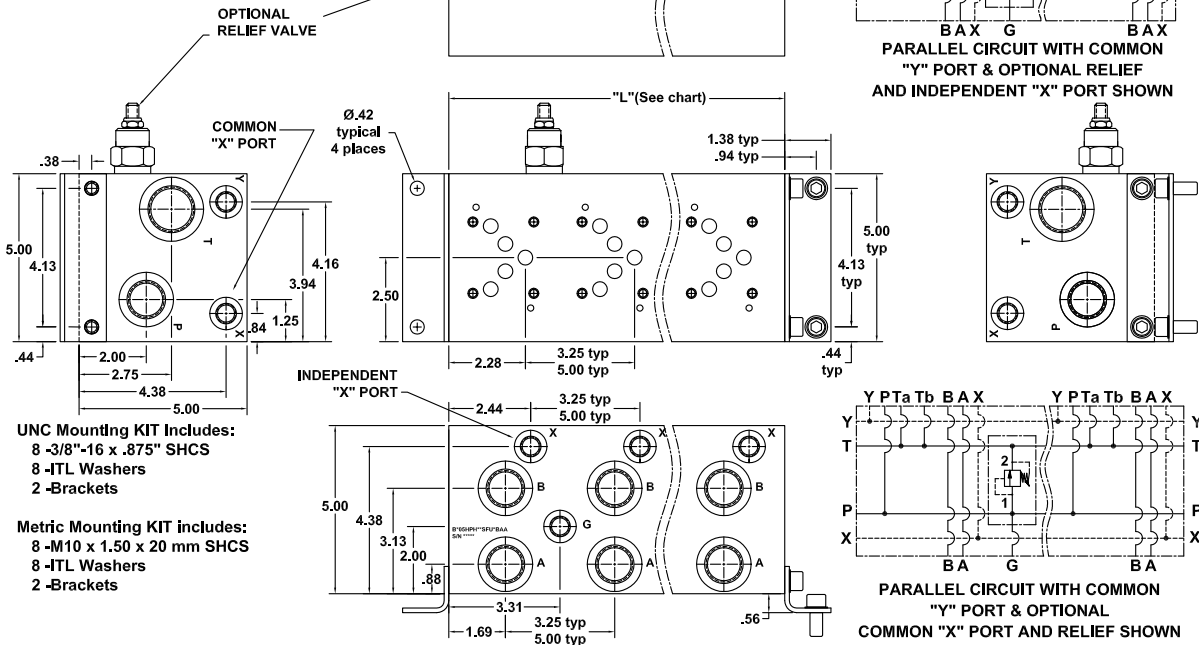


D05H High Flow Parallel Circuit Manifold with X&Y

"DUAL TANKS"

(See Page 1.99.01 for Relief Cartridges)



UNC Mounting KIT Includes:
8 -3/8"-16 x .875" SHCS
8 -ITL Washers
2 -Brackets

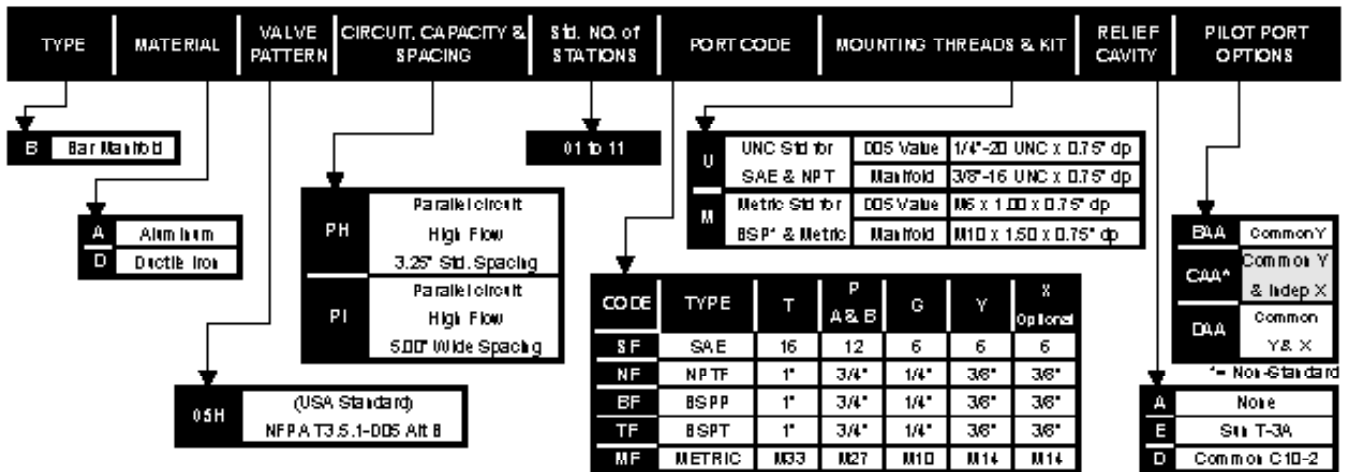
Metric Mounting KIT includes:
8 -M10 x 1.50 x 20 mm SHCS
8 -ITL Washers
2 -Brackets

No. of Stations	1	1*	2	3	4	5	6	7	8	9	10	11	12	13	14	15	16
Dim. "L", 3.25" spacing	3.50	4.50	6.75	10.00	13.25	16.50	19.75	23.00	26.25	29.50	32.75	36.00	39.25	42.50	45.75	49.00	52.25
est. weight in lb.- alum	9	11	16	23	31	38	45	53	60	67	74	82	89	96	104	111	118
est. weight in lb.- iron	22	28	42	62	81	101	121	140	160	180	200	219	239	259	279	298	318
Dim. "L", 5.00" spacing	-	-	8.50	13.50	18.50	23.50	28.50	33.50	38.50	43.50	48.50	53.50	58.50	63.50	68.50	-	-
est. weight in lb.- alum	-	-	20	31	42	54	65	76	87	99	110	121	132	144	155	-	-
est. weight in lb.- iron	-	-	52	83	113	144	174	204	235	265	295	326	356	387	417	-	-

* DIMENSIONS FOR 1 STATION WITH RELIEF CAVITY & GAUGE PORT
NO GAUGE PORT SUPPLIED WITH SINGLE STATION MANIFOLD
SHADED AREA AVAILABLE ON SPECIAL ORDER ONLY

PART NUMBER SYSTEM

Aluminum D05H with 3.25" spacing, Common Y & SAE porting example: BA05H PH**SFUABAA



WE RESERVE THE RIGHT TO DISCONTINUE MODELS, OR CHANGE SPECIFICATIONS WITHOUT NOTICE OR INCURRING OBLIGATION

Lynch Products Can Be Modified to Suit Your Application

Phone: 1 (888) 626-4365 or +1 (905) 363-2400 Fax: 1 (800) 263-5807 www.lynch.ca sales@lynch.ca