

# MODEL CODE BREAKDOWN

RM\_03G1A-B^C@\$\$D

- Material Code ( ) A Aluminum Body  
D Ductile Iron Body
- Adjustment Code ( ^ ) L Standard Screw
- Seal Material Code ( @ ) N Buna  
V Viton
- Rest Condition Code ( \$ ) C Normally Closed (Slow)  
H Normally Open (Fast)
- Voltage Code ( ## ) 11 110 Vac  
24 24 Vdc

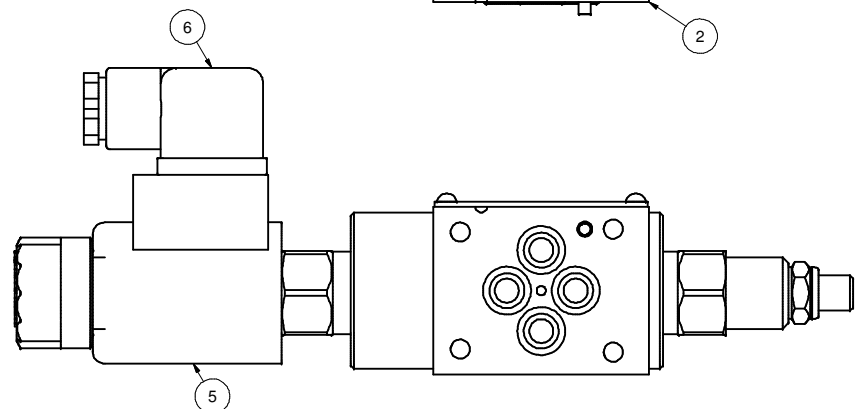
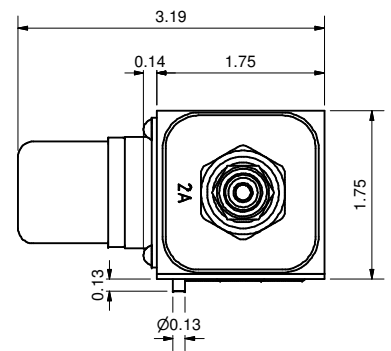
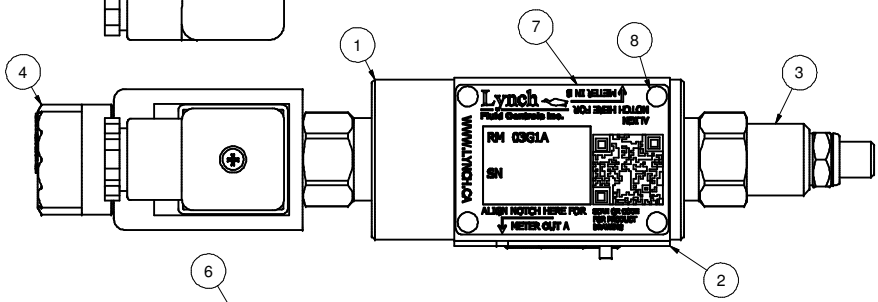
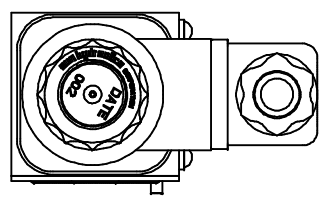
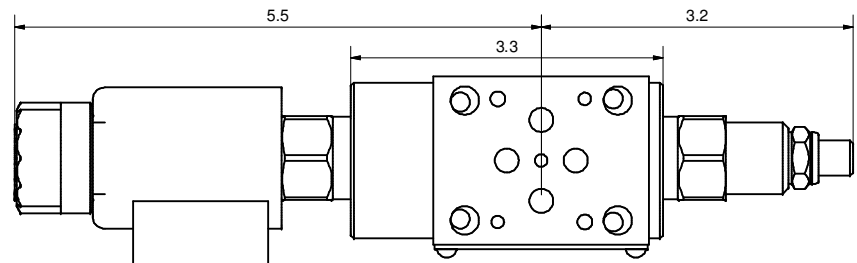
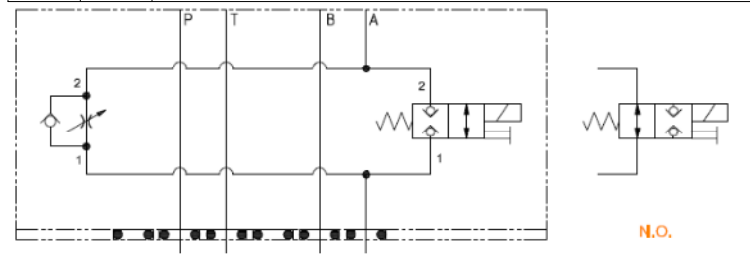
**Lynch**  
Fluid Controls Inc.

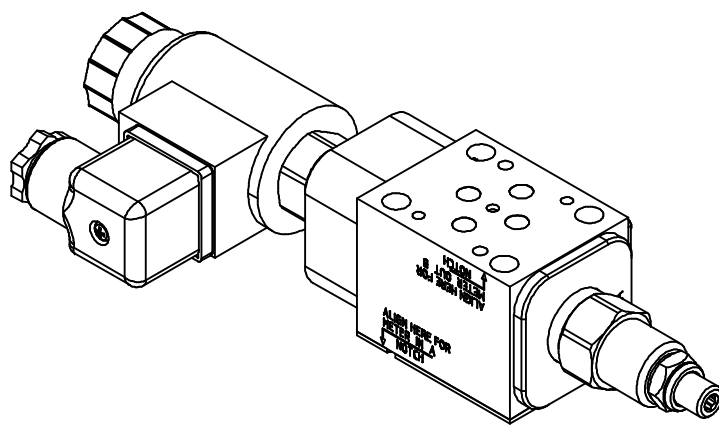
**PROPRIETARY NOTICE**  
THIS DRAWING DESCRIBES A PROPRIETARY PRODUCT OF LYNCH FLUID CONTROLS INC. WHICH MAY NOT BE REPRODUCED IN WHOLE OR IN PART NOR GIVEN TO A THIRD PARTY WITHOUT WRITTEN PERMISSION FROM LYNCH FLUID CONTROLS INC.

DATA UNIT: INCH  
3RD ANGLE PROJECTION

DWG NO	RM_03G1A-B^C@\$\$D	REV	-
MODEL CODE	RM_03G1A-B^C@\$\$D		
TITLE	2 Speed D03 Sandwich Module M/O A Direct Acting Poppet Needle w/ FF Check		

Bill of Material		
ITEM	QTY	DESCRIPTION
1	1	Manifold Body
2	1	Seal Plate
3	1	[Flow Control] Fully adjustable needle valve with reverse flow check
4	1	[Solenoid] 2-way, direct-acting, solenoid-operated directional poppet valve
5	1	Coil
6	1	Connector
7	1	Nameplate
8	4	Screws





**MODEL CODE BREAKDOWN**

**RM\_03G1A-B^C@\$\$#D**

Material Code ( ) A Aluminum Body  
D Ductile Iron Body

Adjustment Code ( ^ ) L Standard Screw

Seal Material Code ( @ ) N Buna  
V Viton

Rest Condition Code ( \$ ) C Normally Closed (Slow)  
H Normally Open (Fast)

Voltage Code ( ## ) 11 110 Vac  
24 24 Vdc

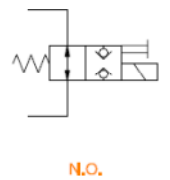
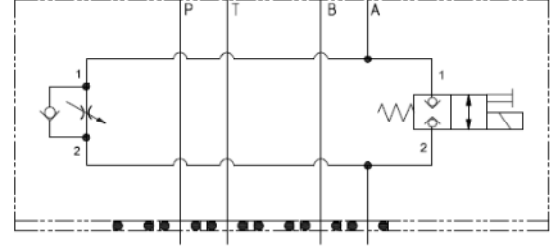
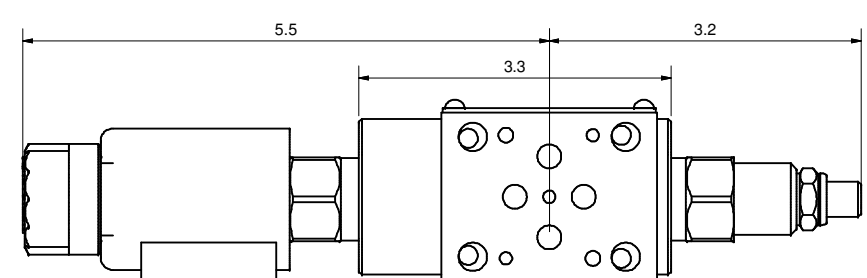
**Lynch**  
Fluid Controls Inc.

**PROPRIETARY NOTICE**  
THIS DRAWING DESCRIBES A PROPRIETARY PRODUCT OF LYNCH FLUID CONTROLS INC. WHICH MAY NOT BE REPRODUCED IN WHOLE OR IN PART NOR GIVEN TO A THIRD PARTY WITHOUT WRITTEN PERMISSION FROM LYNCH FLUID CONTROLS INC.

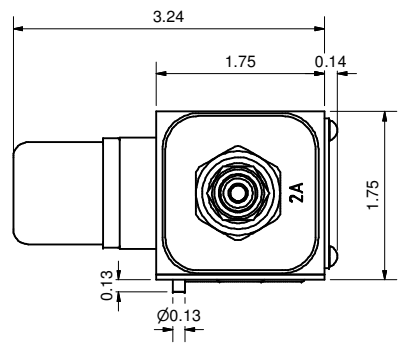
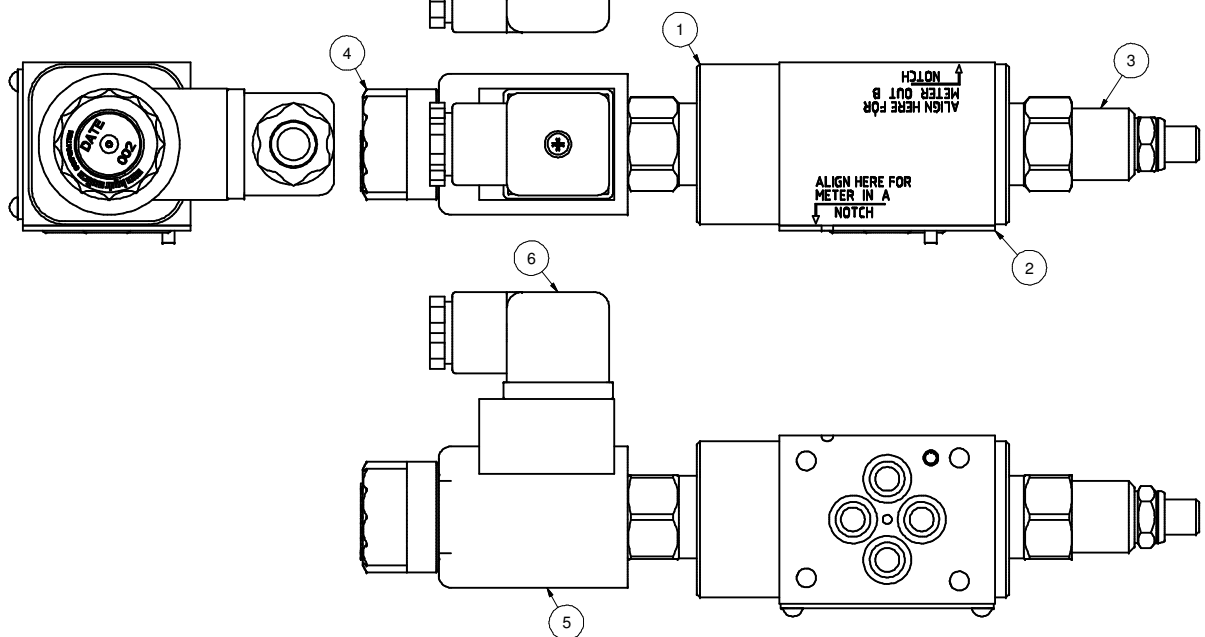
DATA UNIT: INCH 3RD ANGLE PROJECTION

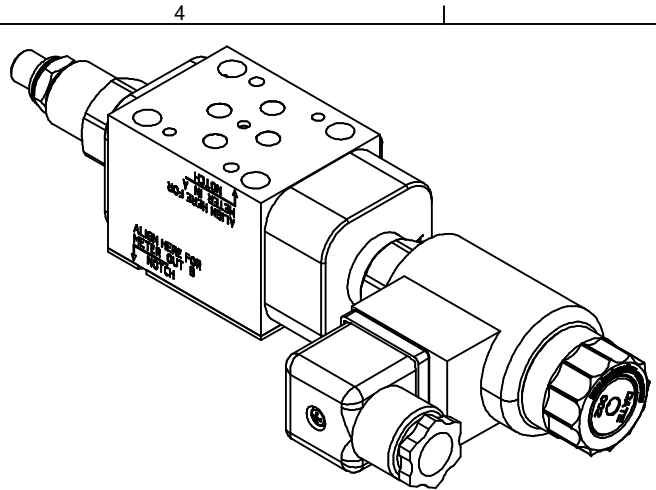
DWG NO	RM_03G1A-B^C@\$\$#D	REV	-
MODEL CODE	RM_03G1A-B^C@\$\$#D		
TITLE	2 Speed D03 Sandwich Module M/I A Direct Acting Poppet Needle w/ FF Check		

Bill of Material		
ITEM	QTY	DESCRIPTION
1	1	Manifold Body
2	1	Seal Plate
3	1	[Flow Control] Fully adjustable needle valve with reverse flow check
4	1	[Solenoid] 2-way, direct-acting, solenoid-operated directional poppet valve
5	1	Coil
6	1	Connector
7	1	Nameplate
8	4	Screws



N.O.





MODEL CODE BREAKDOWN

RM\_03G1A-B^C@\$\$#D

- Material Code ( ) A Aluminum Body  
D Ductile Iron Body
- Adjustment Code ( ^ ) L Standard Screw
- Seal Material Code ( @ ) N Buna  
V Viton
- Rest Condition Code ( \$ ) C Normally Closed (Slow)  
H Normally Open (Fast)
- Voltage Code ( ## ) 11 110 Vac  
24 24 Vdc

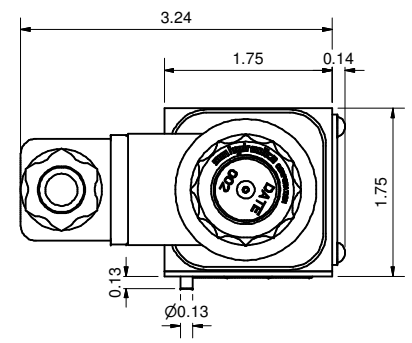
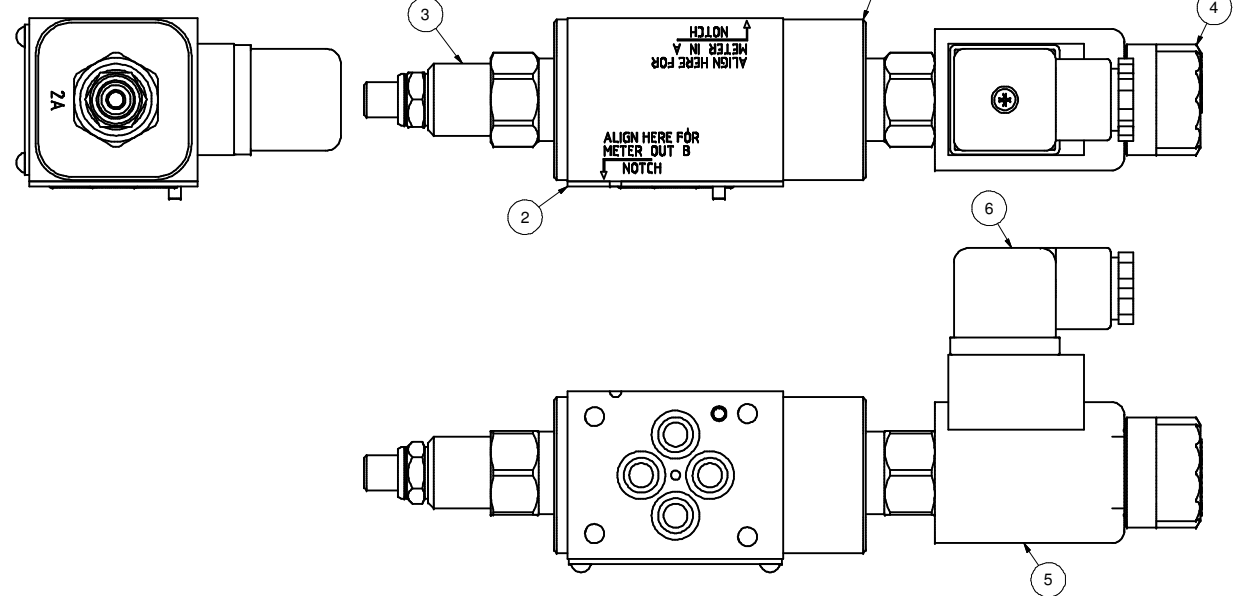
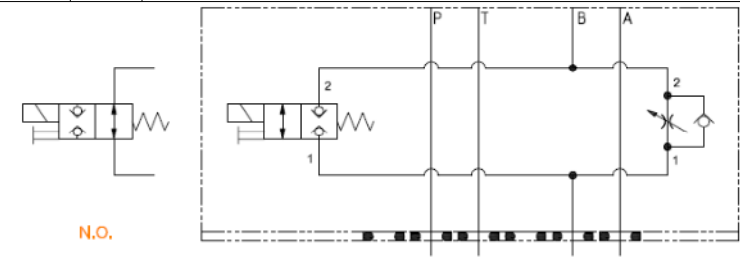
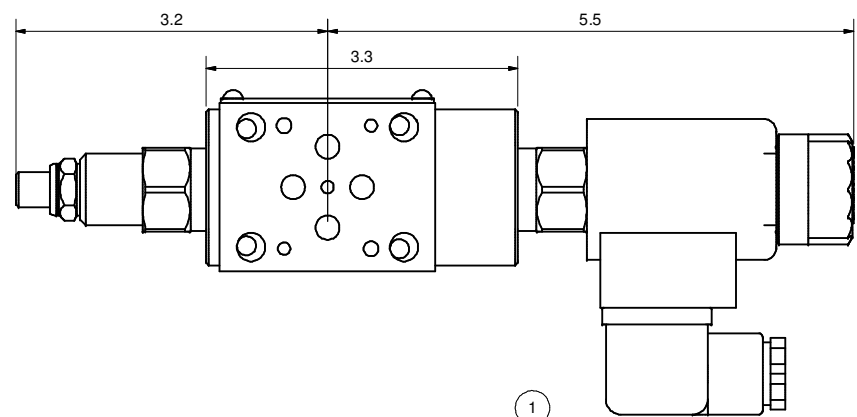
**Lynch**  
Fluid Controls Inc.

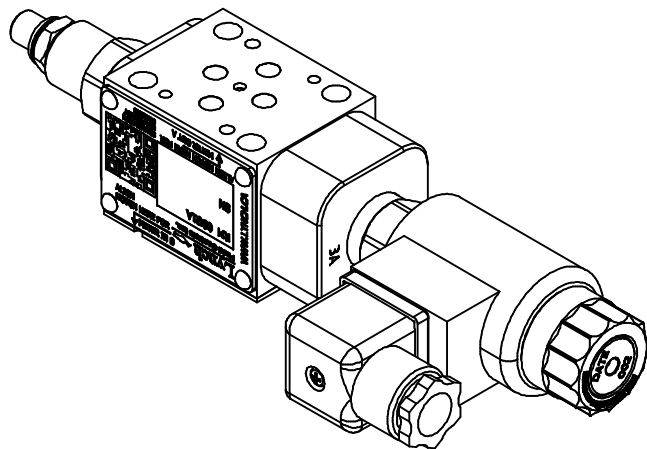
PROPRIETARY NOTICE  
THIS DRAWING DESCRIBES A PROPRIETARY  
PRODUCT OF LYNCH FLUID CONTROLS INC.  
WHICH MAY NOT BE REPRODUCED IN WHOLE  
OR IN PART NOR GIVEN TO A THIRD PARTY  
WITHOUT WRITTEN PERMISSION FROM  
LYNCH FLUID CONTROLS INC.

DATA UNIT: INCH  
3RD ANGLE PROJECTION

DWG NO	RM_03G1A-B^C@\$\$#D	REV	-
MODEL CODE	RM_03G1A-B^C@\$\$#D		
TITLE	2 Speed D03 Sandwich Module M/O B Direct Acting Poppet Needle w/ FF Check		

Bill of Material		
ITEM	QTY	DESCRIPTION
1	1	Manifold Body
2	1	Seal Plate
3	1	[Flow Control] Fully adjustable needle valve with reverse flow check
4	1	[Solenoid] 2-way, direct-acting, solenoid-operated directional poppet valve
5	1	Coil
6	1	Connector
7	1	Nameplate
8	4	Screws





### MODEL CODE BREAKDOWN

RM\_03G1A-B^C@\$##D

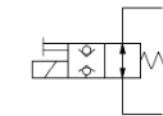
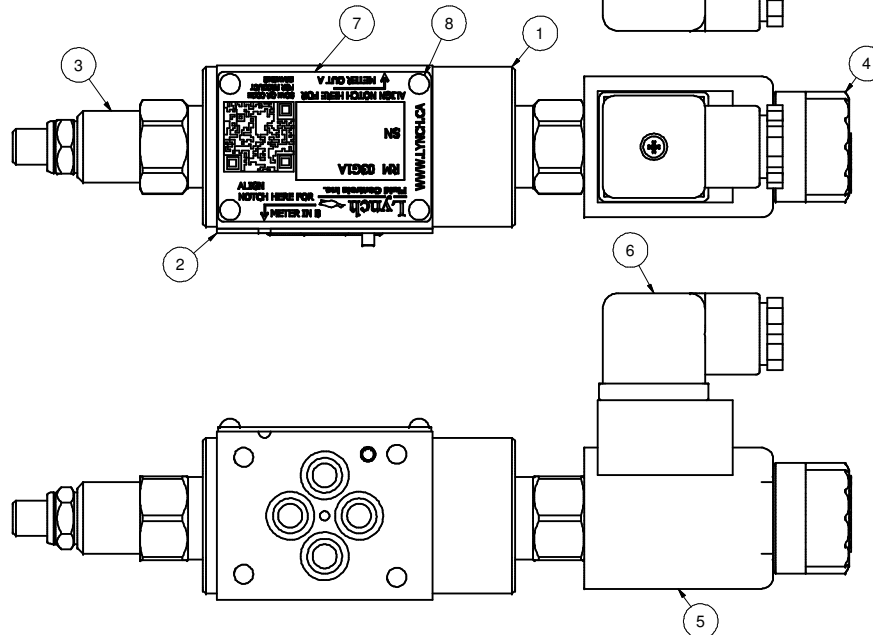
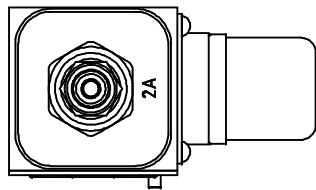
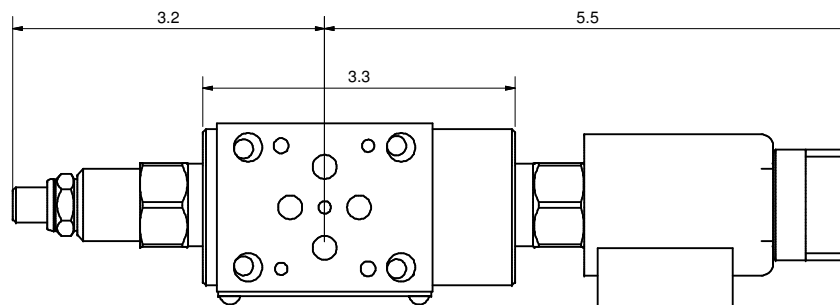
Material Code ( \_ ) A Aluminum Body  
D Ductile Iron Body

—Adjustment Code      ( ^ ) L Standard Screw

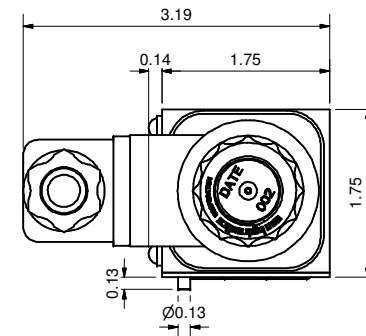
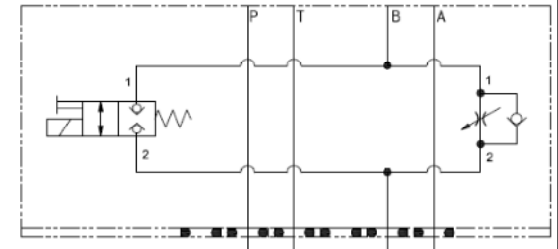
—Seal Material Code    ( @ ) N Buna  
                                     V Viton

—Rest Condition Code ( \$ ) C Normally Closed (Slow)  
H Normally Open (Fast)

—Voltage Code (##) 11 110 Vac  
24 24 Vdc

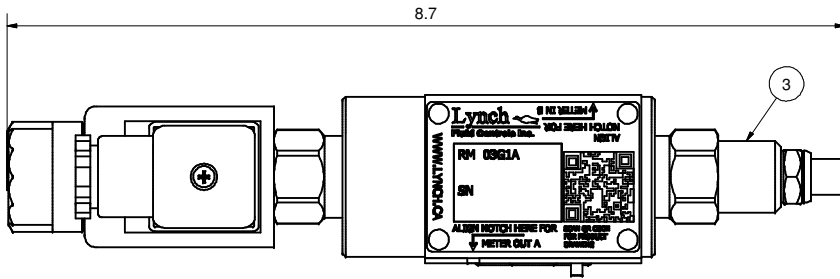


N.O.



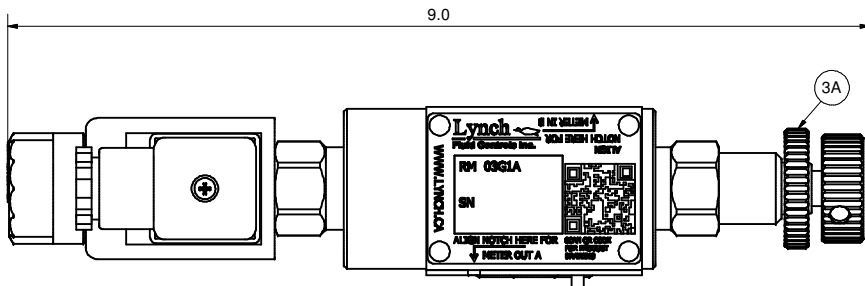
LYNCH FLUID CONTROLS INC. RESERVES THE RIGHT TO DISCONTINUE MODELS, OR CHANGE SPECIFICATIONS WITHOUT NOTICE OR INCURRING OBLIGATION.

## L - Standard Screw



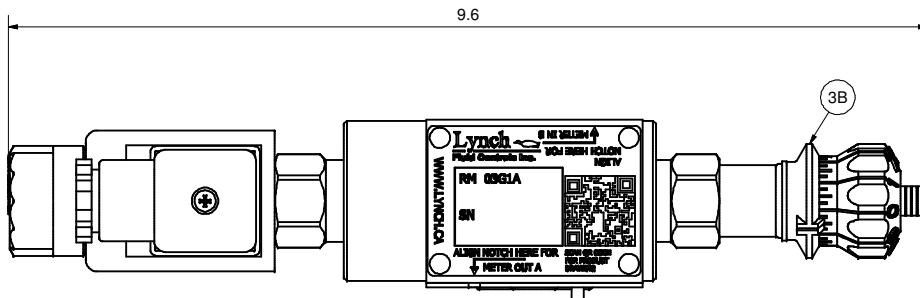
## K - Hand-Knob

Non-Standard Option: Order Standard L control w/ 991 211 Kit



## H - Calibrated Hand-Knob

Non-Standard Option



**Lynch**  
Fluid Controls Inc.

PROPRIETARY NOTICE  
THIS DRAWING DESCRIBES A PROPRIETARY PRODUCT OF LYNCH FLUID CONTROLS INC. WHICH MAY NOT BE REPRODUCED IN WHOLE OR IN PART NOR GIVEN TO A THIRD PARTY WITHOUT WRITTEN PERMISSION FROM LYNCH FLUID CONTROLS INC.

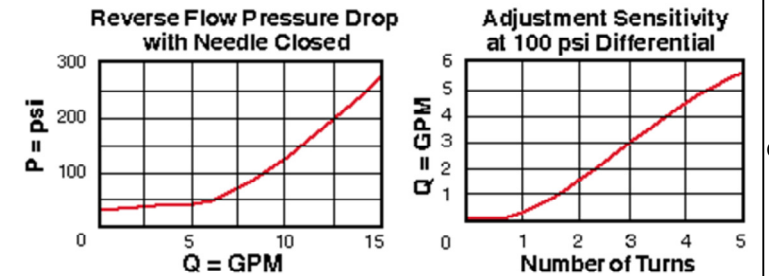
DATA UNIT: INCH  
3RD ANGLE PROJECTION

DWG NO RM\_03G1A-B^C@\$\$#D  
MODEL CODE RM\_03G1A-B^C@\$\$#D

TITLE  
Technical Data & Non-Standard Options

Bill of Material		
ITEM	QTY	DESCRIPTION
3	1	[Flow Control] Fully adjustable needle valve with reverse flow check
3A	1	[Flow Control] Fully adjustable needle valve with reverse flow check [Hand-Knob]
3B	1	[Flow Control] Fully adjustable needle valve with reverse flow check [Calibrated Hand-Knob]

## Flow Control



## Solenoid

